

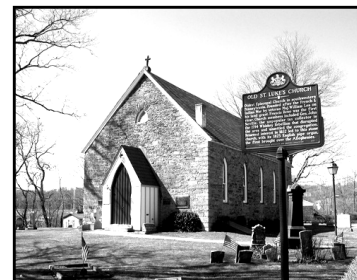
## Gettysburg 150



July 1-3, 1863

# Old St. Luke's

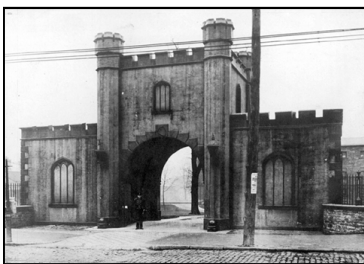
CHURCH, BURIAL GROUND AND GARDEN  
330 Old Washington Pike  
Scott Township, Pennsylvania 15106  
June 2013 — VOL. XXXII NO. 2



## The Civil War and Pittsburgh

Pittsburgh was the primary military manufacturing facility for the U. S. War Department during the Civil War. The Allegheny Arsenal in Lawrenceville produced 40,000 bullets and cartridges a day, as well as saddles and cavalry equipment. The Fort Pitt Foundry produced huge iron howitzers, mortars and artillery projectiles.

On September 17, 1862, the same day the Battle of Antietam in Maryland took place, the Arsenal was blown apart due to negligent handling of gunpowder. Seventy-eight workers were killed and the neighboring buildings were riddled with shell fragments.



Allegheny Arsenal Entrance

In early 1863, the U. S. War Department moved to defend Pittsburgh from an anticipated invasion by Confederate troops. Small forts and earthworks were constructed on the south side of Pittsburgh. Fort Smalls was built at the mouth of Becks Run. Fort Jones in Mount Oliver, and Fort Laughlin at Arlington Avenue were built by employees of the Jones and Laughlin Steel Company.

One older fortification that had been built near Pittsburgh in the Revolutionary War period was still usable in the Civil War, the one belonging to Nathan Couch.

Nathan Couch had built a neighborhood fort in the south hills of Pittsburgh circa 1775 to be a "City of Refuge" shelter for pioneer families as they faced hostile Indian attacks. It was used again when distraught militiamen organized their Whiskey Rebellion attack against Gen. John Neville in 1794. It was still useful for defense in the Civil War years and until it was demolished in 1890. The Fort Couch Inn was built on the fort's foundation in 1927, The Pioneer Inn was next built there in 1939. McDonalds Restaurant sits there today.

## The Civil War and Gettysburg

The Civil War began in 1861 and ended in 1865. A total of 620,000 were killed in the military combat, and 51,000 were killed in the battle at Gettysburg, July 1 to 3, 1863, called the turning point of the Civil War.

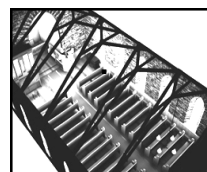


As the Civil War began, countless prayers were uttered across the United States. In Pennsylvania, Bishop Alonzo Potter asked all churches, including (Old) St. Luke's, to pray for the country in the hour of great need, that God would order all things so that peace and happiness, truth and justice, religion and piety may be established among us for all generations.



Alonzo Potter  
1802-1887

Bishop Potter was the Bishop of Pennsylvania (based in Philadelphia) and on February 23, 1854 he came to (Old) St. Luke's Church to consecrate the new stone structure. Church practice is that a church structure will not be consecrated until all outstanding debt has been paid and ownership is secure. The Revs. Theodore Lyman, George Foote and Richard Smith, serving between 1852-1856, must have been faithful, generous and grateful stewards in their Christian ministry. Old St. Luke's Church is still a consecrated church.



OSL with roof off;  
graphic by Carnegie  
Mellon University

*Open House each Sunday  
June 2 to August 25  
1:30 to 4 p.m.*

*Faure String Trio Program  
Friday, June 21, 7 p.m.*

*Whiskey Rebellion Sunday  
July 14, 2 p.m.*

# WHAT DAVID STEEL'S TABLE STONE MIGHT REVEAL

The Burial Ground and Garden of Old St. Luke's Church contains head stones (tomb stones) foot stones, table stones, and obelisks. Each one displays personal information about the deceased the family wished to permanently display. The table stone over Captain David Steel's grave can tell us more than that he lived from 1749 to 1819. To the careful observer, this table stone can point to Steel's religious and political convictions.

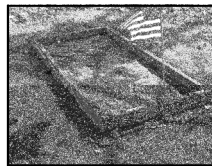
## Steel's Christian Faith

The fact that he and his family are buried outside this church indicate their Christian commitment to and their affection for (Old) St. Lukes. Legend has it that in 1765, at age 16, Steel was the surveyor for the Pioneers (British Army engineers) who chose this promontory overlooking Chartiers Creek. to build a British garrison. and which is today's Old St. Luke's site. Steel later owned a plantation he named Steel's Discovery, at the intersection of Toms Run and the Chartiers Creek, very close to today's Chartiers Valley High School.

Before the Revolutionary War, no church building existed in the Chartiers Valley. Steel with his neighbors, Major William Lea, Gen John Neville and others might have shared Christian devotions in their homes, and hosted itinerant clergy on occasion. In 1790 (Old) St. Luke's Church was built and received its first vicar, the Rev. Francis Reno, who was ordained in the Episcopal Church.

The Revolutionary War ended the colonial period in American history. Steel no longer gave allegiance to the King when he took on new political assignments, as he had in 1775 when he became Ensign (2nd Lt.) for Pittsburgh Also, thanks to Thomas Jefferson's leadership, the previous mandatory tax support of the Established Church of England in Pennsylvania also ended, and Americans in all of the new states could now voluntarily support the Christian denomination of their choice.

Steel's 1819 grave in the Burial Ground is pointed toward the east, a symbol of belief in the resurrection of Jesus, for as the sun rises in the east, so Jesus, the son of God, rose from the dead. Steel was a man of Christian faith.



## Steel's political convictions

Engraved on the surface of Steel's table stone is a quotation from John Gay's 1728 ballad satire *"The Beggar's Opera:"* *"This world's a farce, and all things show it; I once thought so, but now I know it."* (This quote is not now legible on the table stone, but thanks to CMU's Dr. Yang Cai and students, the letters have been computer scanned. See page 3 for what is partially readable.)

Gay lampooned Italian opera, and in 3 acts and 69 songs, he satirized politics, poverty, injustice and corruption which were present during the years when

Robert Walpole, a Whig, served as Prime Minister of England. Gay pointed his focus on low class thieves as well as aristocrats. It is not known how Steele became enamored of Gay's opera in this country, but it is known that Thomas Jefferson relished the opera performed in Williamsburg in 1768. The pressing question is why Steel chose the quote from *The Beggar's Opera*. It opens up a political review of the American society Steel experienced before and after the Revolutionary War.

## Steel's Social Environment

Gordon S. Wood in his 1991 book *"The Radicalism of the American Revolution,"* gives examples of the monarchical society that existed in the thirteen colonies before the Revolution. These were British colonies, and the King George III and Parliament exerted their influence and were either respected or resented.

In the colonies, especially east of the Allegheny Mountains, there was a decided hierarchical separation between the ruling class of gentlemen, the gentry, and the common folk, who were known just as workers. To be a gentleman you had to have been born in a gentry family, or owned vast acreage, hold great wealth and perhaps own slaves. You were a man of leisure. A commoner was a worker who produced the necessities and luxuries the gentry enjoyed. Doctors, lawyers and clergymen were automatically deemed to be gentlemen. Ben Franklin as a worker had amassed enough wealth so that at age 42, he became a gentleman of leisure and of high regard.

In the two decades before the Revolutionary War, common folk resented the taxes imposed by the British Parliament and the failure of the gentlemen in the Continental Congress to condemn England's taxation without representation. The seeds of revolution were planted.

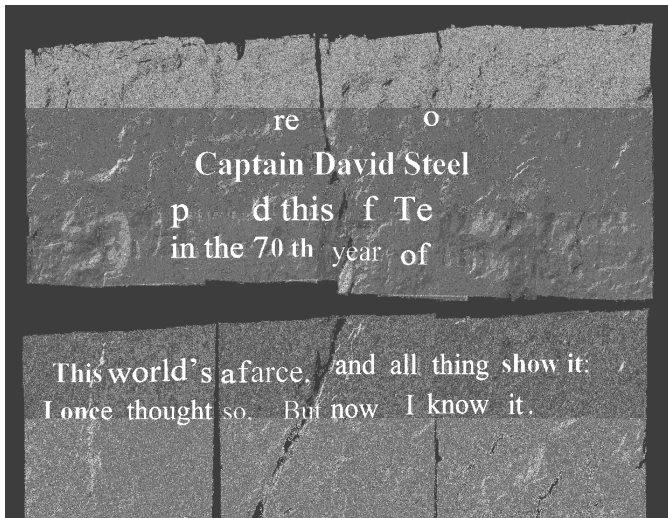
## From Monarchy to Democracy

When Jefferson, Franklin and others in a committee wrote in the Declaration of Independence *"that all men are created equal"* they quashed the hierarchical gentry-commoner class division. Now in a republic, all white freemen could hope to be active politically, no longer as King's subjects but as citizens, and seek elected office. Triggered by the production of Revolutionary War materials and the government's profuse printing of money, after the Revolutionary War workers began to dream of having a few luxuries in their lives. Monarchy was passé, capitalism slowly sprouted, and democracy blossomed.

David Steel was a Captain in the Revolutionary War and a prominent officer holder in Pittsburgh's city government. In 1915 the D.A.R. placed a tablet on the exterior Oliver Avenue wall of Trinity Cathedral and the First Presbyterian Church to honor the citizens, including Steel, who were veterans and leaders who contributed to the early formation of the city of Pittsburgh. On his table stone is placed his emphasis on the quote from *The Beggar's Opera*, perhaps to testify that he first lived under a monarchy, and finally as a citizen of the Republic of the United States of America. Steel was a man of patriotic zeal.

## CMU's Scan of Steel's Table Stone

Carnegie Mellon University used their computer skills in 2007 to reveal most of the illegible engraved letters on David Steel's table stone and 27 other stones in the Burial



Ground. Granite replica markers have been added in front of the scanned head stones. (The lettering shown above is CMU's applied type face.)



CMU staff shown scanning a head stone

## A Church near Boston's Bombing

Situated 300 yards from the site of the tragic Boston bombings on Monday, April 22 is Trinity Episcopal Church, Copley Square, Back Bay, Boston. The first structure was built in 1733, but destroyed by fire in 1872. The present building was designed by Henry Hobson Richardson, and completed in 1893. Built on a mud flat, some 4500 wooden piles were sunk, and kept moist to prevent rotting. (Other Richardson's buildings include Allegheny County Courthouse, 1883, and Emmanuel Episcopal Church, North Side, Pittsburgh, 1884.)



## What Holds Church Walls Firm?

Worshippers, prayers and sacraments present within this church over the past 159 years have helped to keep these church walls upright. The past is no longer visible, but now we can see the mortar that fills the gaps between the limestones that are set in a random pattern. Both faith and mortar hold the walls secure. Since there was no cement truck in 1852 to make a delivery, how did the stone masons get the mortar they used here?

Charles Nixon (1929-2009) was the first president of the restoration effort that began in 1975. He was one of our research team that established the archive files we rely on to teach the history of this church. One day he gave a talk on the mortar that can be seen in the exterior walls of this church. He pointed to the sand aggregate and he gave special attention to the tiny pieces of charcoal embedded in the mortar. He said that stone masons made their own mortar on site. They gathered a pile of limestone, then mixed in lumps of coal which were set on fire. When ready, the pile was covered with a blanket of earth, to make a type of kiln so that the coal would burn and smolder. The burnt limestone, with a sand aggregate and water, made the mortar we can see today in the exterior church walls.. (Portland cement replaced the use of limestone after World War I.)

## Who are our Wedding Docents?



Every church is grateful for seemingly invisible saints who so often perform vital ministries largely unrecognized. Such is the case with the women who serve as docents at the Christian weddings we host at this Church.

Standing, from the left: Elaine Key, Barbara Andrews, Doris Davies, Susan Pollard, Arlene Dorow, Barbara Meharey, Susan Wilcox, Joan Kubancek, Jackie Cornell, and Ellen Goss. Seated: Peggy Douglas, Richard Davies, Sue Hornbaker, Norma Cappello (Director), and Sue Waugaman. Not pictured: Marian Powney and Fred Schell (Organist). We thank them for serving.



## Old St. Luke's Church

c/o The Rev. Richard Davies  
300 Madison Ave., #309  
Pittsburgh, Pa. 15243-1087

### 2013 Dues and Memorial Designation

Name \_\_\_\_\_

Address \_\_\_\_\_

City \_\_\_\_\_ Zip \_\_\_\_\_

Phone \_\_\_\_\_

Email \_\_\_\_\_ Prefer Newsletter by email \_\_\_\_\_

Dues \$15 \_\_\_\_\_ or \$ \_\_\_\_\_

In Memory of \_\_\_\_\_

Memorials remembered in November 24 Service

Payable to OLD ST. LUKE'S CHURCH  
Please mail to Richard Davies  
300 Madison Ave., #309  
Pittsburgh, Pa. 15243-1087

### A Window Sun Catcher



Designed in Williamsburg for us, we offer this three dimensional translucent gold finish Window Sun Catcher and Christmas Decoration.

\$15 (\$17 if mailed)

Call 412-489-3795 for details.

#### **Please consider including Old St. Luke's Church in your Last Will and Testament**

*"If someone visits a small, isolated country church and finds it is well kept, cared for and clearly prayed in, this is itself a witness. So time and money spent caring for such a building should not in principle be regarded as a waste."*

*Quote is from "A Radical Vision for the Church"  
The Church of Wales, Report 2012*